



SmartPTT Monitoring

SmartPTT Monitoring is a tool for in-depth analysis and control over connected MOTOTRBO infrastructure. SmartPTT Monitoring allows checking the performance of dispatcher system, providing the following information.

- RSSI – received signal strength
- Type of transmission: ARS, GPS, Text, Voice Call, Emergency, etc.
- Transmission duration
- Caller and Receiver IDs
- Repeater ID

Supported MOTOTRBO Systems

- IP Site Connect
- Capacity Plus
- Linked Capacity Plus
- Standalone repeater

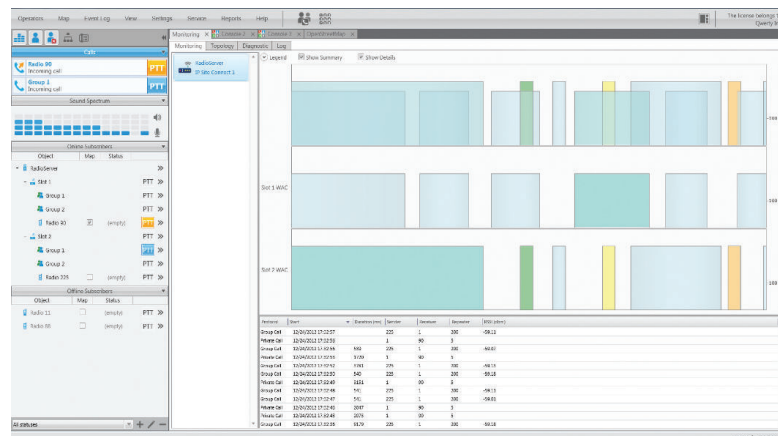
Supplied in 2 variants

- Additional service to SmartPTT Enterprise
- Separate product

SmartPTT Monitoring Functionality

Real Time Monitoring

Graphical representation of voice and data activity received from MOTOTRBO repeaters allows watching over the system in real time. Flowing bars representing the activity and signal level are displayed for each connected channel individually and in aggregated view. The bar height corresponds to the received signal strength.



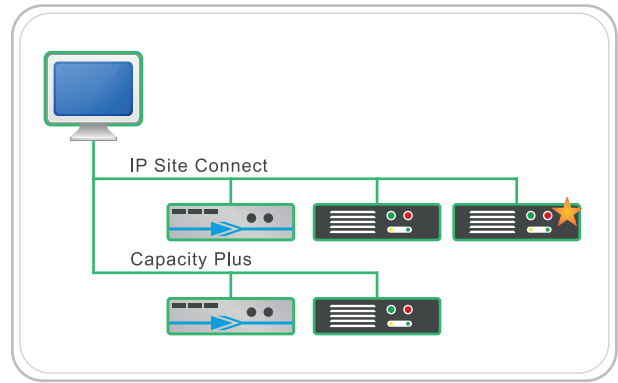
Hardware Diagnostics

Information about current state of connected MOTOTRBO repeaters, system infrastructure (UPS, routers, servers) monitoring via SNMP, hardware failures logging.

- IP Address
- Model Number
- Firmware Version
- Rx/Tx Frequencies
- Rx/Tx Alarm
- Temperature Alarm
- Fan Alarm
- AC Power Alarm

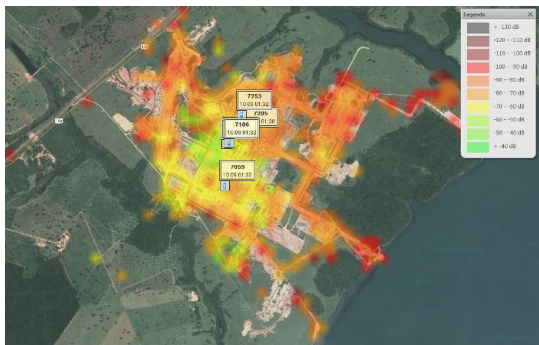
Network Topology

Graphical representation of radio network schema. Topology is defined automatically or defined by means of Radioserver Configuration tool and presented in the dispatcher console displaying network structure and workload percentage of each repeater. Network structure includes all MOTOTRBO repeaters and software peers arranged in accordance with the specific of the connected systems. Each Capacity Plus or IP Site Connect system is represented by a separate branch with the number of corresponding repeaters.



Alarm Log & Notifications

One of the best ways to learn about alarms. For example, the service informs about a repeater failure or about status of IP routers or backup power sources. Events with critical, high or minor severity are highlighted red, pink and yellow respectively. Besides reviewing current events, Alarm Log provides the ability to view saved events for some particular time period. Flexible notification system allows to notify system administrators via email or text message in case of any issues with a network.



Repeater Control

Remote repeater administration for connected MOTOTRBO repeaters (channel change, power level settings, enabling and disabling).

Coverage Map

Graphical representation of network coverage area based on RSSI level of the received signals from GPS-enabled MOTOTRBO radios.

Monitoring Analytics

Graphical representation of the collected monitoring data:

- Proportions of event duration during a chosen time frame and per day
- Proportions of voice and data activity per day during a chosen time period



Monitoring Reports

Detailed report based on collected monitoring data and filtered by number of criteria. Report provides information about MOTOTRBO repeater radio ID, source and destination subscriber radio ID or talk group ID, event duration, event type, RSSI, etc.

